

Bassoon Sight-reading tests from 2018 – a sampler

The sight-reading requirements for woodwind are changing for 2018. A set of tests for Grades 1-8 are provided here to give you a flavour of what to expect, along with a table outlining the new parameters.

Further practice material can be found in ABRSM's new books of sample sight-reading tests, available to purchase at www.abrsm.org/shop.

Grade 1

Happily



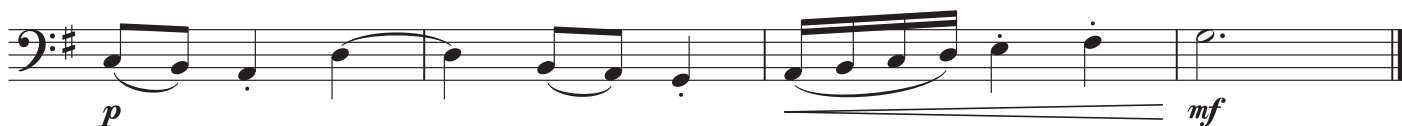
Grade 2

Andante



Grade 3

Espressivo



Grade 4

Tranquillo

mp *f*

mf *p*

Grade 5

Con brio

mp *mf*

f *mp*

Grade 6

Hobnail Boots

Tempo giusto

f pesante

p

mf *mp*

ff

cresc.

Grade 7

Once Upon a Time

Doloroso

Musical score for 'Once Upon a Time' in bass clef, 3/8 time, key of D major. The score consists of three staves. The first staff begins with a *mp* dynamic. The second staff includes markings for *poco rall.* and *a tempo*, with a *mf* dynamic. The third staff concludes with a *mp* dynamic.

Grade 8

Late-Night Romance

Tango

Musical score for 'Late-Night Romance' in bass clef, 4/4 time, key of B-flat major. The score consists of five staves. The first staff begins with a *mp espress.* dynamic and includes a triplet. The second staff includes markings for *poco accel.*, *poco rit.*, and *a tempo*, with a *pp* dynamic. The third staff includes a *mf* dynamic and a triplet. The fourth staff includes a *p* dynamic and a triplet. The fifth staff concludes with dynamics of *f*, *ff*, *p*, and *pp*.

Sight-reading parameters

The table below shows the introduction of elements at each grade. Please note that these parameters are presented cumulatively, i.e. once introduced they apply for all subsequent grades (albeit within a logical progression of difficulty).

	Length (bars)	Time	Keys*	Range	Other features that may be included
Grade 1	4	4/4 3/4	G, F majors	G-g	<ul style="list-style-type: none"> • note values; rests • notes tongued or with simple two-note slurs • f and mf
	6	2/4			
Grade 2	8		C major E minor	E-b	<ul style="list-style-type: none"> • and patterns; rests • tied notes • staccato • mp and <i>cresc.</i> hairpin
Grade 3		3/8	A minor	E-c'	<ul style="list-style-type: none"> • accidentals (within minor keys only) • ; simple semiquaver patterns; rests • accents • p and <i>dim.</i> hairpin
Grade 4	c. 8	6/8	D major D minor	D-f'	<ul style="list-style-type: none"> • chromatic notes • anacrusis • tenuto • pause sign
Grade 5	c. 8-16		A, B \flat , E \flat majors B, G minors	C-g'	<ul style="list-style-type: none"> • simple syncopation • slowing of tempo at end • ff and pp
Grade 6	c. 12-16	9/8 5/8 5/4	E, A \flat majors F \sharp , C minors	B \flat '-a'	<ul style="list-style-type: none"> • changes of time signature • triplet patterns • slowing of tempo followed by <i>a tempo</i> • tenor clef
Grade 7	c. 16-20	7/8 7/4	C \sharp , F minors	B \flat '-bb'	
Grade 8	c. 16-24	12/8	B, D \flat majors	B \flat '-c''	<ul style="list-style-type: none"> • triplet crotchets • acceleration of tempo • simple ornaments

* Minors – natural form at Grade 2, any form from Grade 3

Ranges are presented using the Helmholtz system, i.e.:

