

# Clarinet Sight-reading tests from 2018 - a sampler



The sight-reading requirements for woodwind are changing for 2018. A set of tests for Grades 1-8 are provided here to give you a flavour of what to expect, along with a table outlining the new parameters.

Further practice material can be found in ABRSM's new books of sample sight-reading tests, available to purchase at [www.abrsm.org/shop](http://www.abrsm.org/shop).

## Grade 1

### March



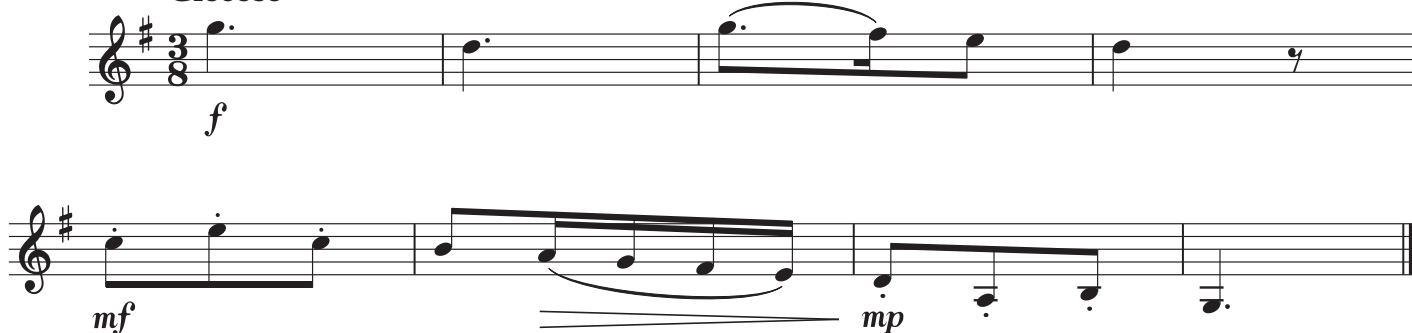
## Grade 2

### Tempo di minuetto



## Grade 3

### Giocoso



## Grade 4

### Andantino

Musical score for Grade 4 Andantino, 4/4 time signature. The piece consists of two staves of music. The first staff begins with a dynamic marking of *f* (forte) and a *mp* (mezzo-piano) marking later. The second staff begins with *f*, followed by *p* (piano), and ends with a *f* marking. The key signature has one flat (B-flat).

## Grade 5

### Vivace

Musical score for Grade 5 Vivace, 4/4 time signature. The piece consists of three staves of music. The first staff begins with a dynamic marking of *f* and a *mp* marking later. The second staff begins with *mf* (mezzo-forte), followed by *p* (piano), and ends with *mp*. The third staff begins with *mf*, followed by *f* (forte). The key signature has two sharps (F# and C#).

## Grade 6

### Five Alive

### Energico

Musical score for Grade 6 Five Alive, 5/8 time signature. The piece consists of three staves of music. The first staff begins with a dynamic marking of *p* (piano). The second staff begins with *mf*, followed by *f*. The third staff begins with *mp* and ends with *f*. The key signature has two sharps (F# and C#).

## Grade 7

### Go with the Flow

**Cantabile**

The score for 'Go with the Flow' is written in treble clef with a key signature of three flats (B-flat, E-flat, A-flat). It consists of four staves of music. The first staff begins with a 3/4 time signature and a *mp* dynamic. The second staff changes to 2/4 time and ends with a *f* dynamic. The third staff includes tempo markings for *poco rall.* and *a tempo*, with a *mp* dynamic. The fourth staff concludes with a *p* dynamic. The piece features flowing eighth and sixteenth notes, often beamed together, with various phrasing slurs and accents.

## Grade 8

### Ragtime Romp

**Allegretto ritmico**

The score for 'Ragtime Romp' is written in treble clef with a key signature of three sharps (F#, C#, G#) and a 2/4 time signature. It consists of four staves of music. The first staff starts with a *mf* dynamic. The second staff includes dynamics of *sub. p* and *f*. The third staff features a sequence of dynamics: *sub. p*, *f*, *p*, *f*, *pp*, and *mf*. The fourth staff ends with a *f* dynamic. The piece is characterized by rhythmic patterns, including eighth and sixteenth notes, and frequent use of slurs and accents.

## Sight-reading parameters

The table below shows the introduction of elements at each grade. Please note that these parameters are presented cumulatively, i.e. once introduced they apply for all subsequent grades (albeit within a logical progression of difficulty).

	Length (bars)	Time	Keys*	Range	Other features that may be included
<b>Grade 1</b>	4	4/4 3/4	G, F majors	a-a'	<ul style="list-style-type: none"> <li>•  note values;  rests</li> <li>• notes tongued or with simple two-note slurs</li> <li>• <b>f</b> and <b>mf</b></li> </ul>
	6	2/4			
<b>Grade 2</b>	8		C major A minor	f-bb'	<ul style="list-style-type: none"> <li>•  and  patterns;  rests</li> <li>• tied notes</li> <li>• staccato</li> <li>• <b>mp</b> and <i>cresc.</i> hairpin</li> </ul>
<b>Grade 3</b>		3/8	D minor	f-g''	<ul style="list-style-type: none"> <li>• accidentals (within minor keys only)</li> <li>• ; simple semiquaver patterns;  rests</li> <li>• accents</li> <li>• <b>p</b> and <i>dim.</i> hairpin</li> </ul>
<b>Grade 4</b>	c. 8	6/8	Bb major G minor	f-bb'''	<ul style="list-style-type: none"> <li>• chromatic notes</li> <li>• anacrusis</li> <li>• tenuto</li> <li>• pause sign</li> </ul>
<b>Grade 5</b>	c. 8-16		D, A, Eb majors E, B minors	e-d'''	<ul style="list-style-type: none"> <li>• simple syncopation</li> <li>• slowing of tempo at end</li> <li>• <b>ff</b> and <b>pp</b></li> </ul>
<b>Grade 6</b>	c. 12-16	9/8 5/8 5/4	E, Ab majors F#, C minors	e-eb'''	<ul style="list-style-type: none"> <li>• changes of time signature</li> <li>• triplet patterns</li> <li>• slowing of tempo followed by <i>a tempo</i></li> <li>• swung style</li> </ul>
<b>Grade 7</b>	c. 16-20	7/8 7/4	C#, F minors	e-e'''	
<b>Grade 8</b>	c. 16-24	12/8	B, Db majors	e-f'''	<ul style="list-style-type: none"> <li>• triplet crotchets</li> <li>• acceleration of tempo</li> <li>• simple ornaments</li> </ul>

\* Minors - natural form at Grade 2, any form from Grade 3

Ranges are presented using the Helmholtz system, i.e.:

